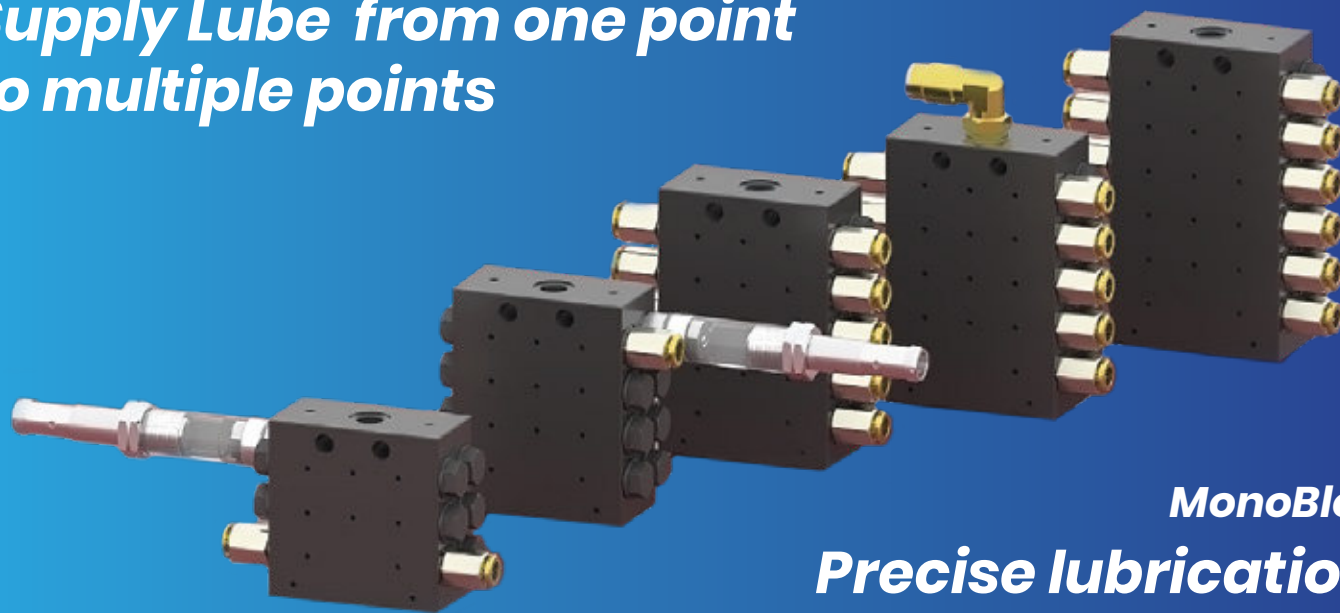


**Supply Lube from one point  
to multiple points**



**MonoBlock  
Precise lubrication..**

### Features :

- The input of Progressive unit could be continuous / Intermittent
- The Output lubricant from the progressive units are volumetric (Every movement of the plunger delivers a fixed quantity of lubricant)
- The Progressive units cycle is on until lubricant supply stops.
- When the lubricant supply restarts , the units restarts from where it had stopped earlier.
- Every plunger must complete its full movement before another starts moving.
- The External obstructions in the supply line the plunger to stop and this would result in failure of the units. The failure of any one of the units causes the complete system to shutdown.

### Distributor Optional Features



BARE DISTRIBUTOR



DISTRIBUTOR WITH  
CYCLE INDICATOR



SIDE SENSING DISTRIBUTOR



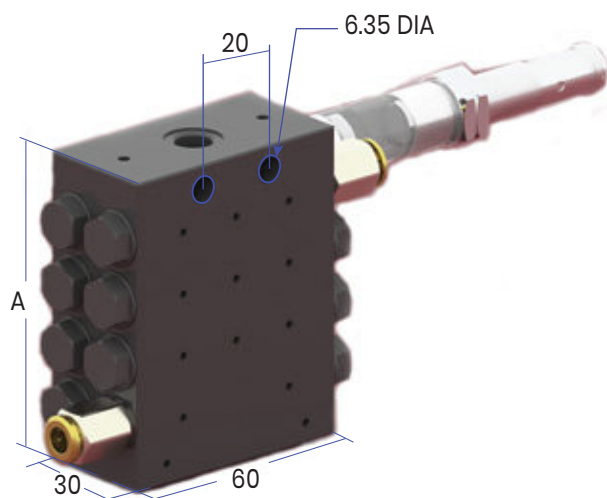
DISTRIBUTOR WITH MLS



DISTRIBUTOR WITH PROXIMITY

RIKKON GROUP OF COMPANIES

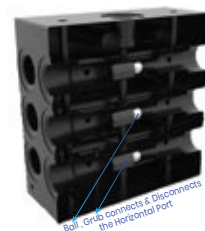
## SVM 21 - D MODEL CLASSIFICATION



Model	Description	'A' Dimension
SVM 21 - D - 2	2 WAY	60
SVM 21 - D - 6	6 WAY	60
SVM 21 - D - 8	8 WAY	75
SVM 21 - D - 10	10 WAY	90
SVM 21 - D - 12	12 WAY	105
SVM 21 - D - 14	14 WAY	120
SVM 21 - D - 16	16 WAY	135
SVM 21 - D - 18	18 WAY	150
SVM 21 - D - 20	20 WAY	165
SVM 21 - D - 22	22 WAY	180
SVM 21 - D - 24	24 WAY	195
SVM 21 - D - 26	26 WAY	210
SVM 21 - D - 28	28 WAY	225

## SVM 21 - D Technical Specification

Type	SVM 21 Progressive Distributor Monoblock
Model	SVM 21 - DV = Vertical Cross Ported Brass Cone SVM 21 - DH = Horizontal Cross Portal Ball & Grub SVM 21 - DN = Non - Ported
Material	SVM-DV-A- Carbon Alloy Steel / SVM-DV-B- Stainless
Lube Output	Steel
Min Operating Pressure	0.2 CC Per Outlet Per Cycle
Max Operating Pressure	15 Bars
Inlet Connection Size	400 Bars
Outlet Connection Size	1/8 " BSPF for DV and M10 x 1(F) for DH
Working Temperature	M10 x 1(F) or 6mm OD tube or 4mm OD tube
Monitoring	Upto 100°C
Lubricant	Cycle Indicator / Limit Switch / Proximity



**(DH) Horizontal**

The DH Type distributor is manufactured in such a way that the outputs are linked in horizontal direction internally within the distributor.



**(DV) Vertical porting**

The DV Type distributors is manufacturing in such a way that the outputs are linked in vertical direction internally within the distributor.

No of ways Available in

DH / DV = 6 , 8 , 10 , 12 , 14 , 16 , 18 , 20

DN = 6 , 8 , 10 , 12 , 14 , 16 , 18 , 20 , 22 , 24 , 26 , 28 Ways

**(DN) No porting**

The DN Type Distributor is manufactured in such a way that the outputs are individual. If one output is blocked then the distributor gets blocked ( no output)

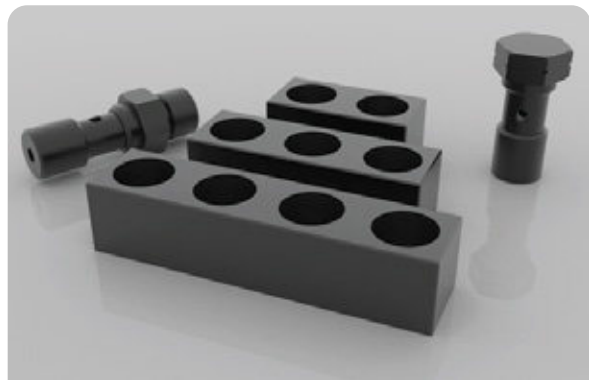


## FITTINGS

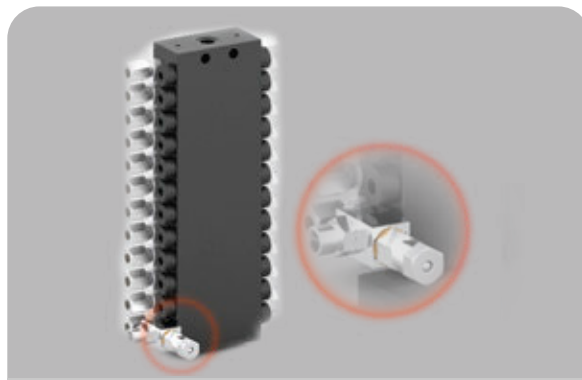
BRASS ELBOW PFF TYPE , SWIVEL ELBOW , 4MM & 6MM MPFF / HPFF TYPE , HOSE STUD STRAIGHT / ELBOW AVAILABLE. AND MUCH MORE FITTINGS AVAILABLE IN CARBON STEEL AND STAINLESS STEEL MATERIALS.



## Accessories



**Combinational Blocks**  
To combine multiple outputs from the distributor



**Performance Indicator**  
Indicates the blockage in the outlet of the distributors

## HOW TO ORDER ?

### Product Model

21D Model

### No of Outlets

06 - 06 Outlets  
08 - 08 Outlets  
10 - 10 Outlets  
12 - 12 Outlets  
14 - 14 Outlets  
16 - 16 Outlets  
18 - 18 Outlets  
20 - 20 Outlets  
22 - 22 Outlets  
24 - 24 Outlets  
26 - 26 Outlets  
28 - 28 Outlets

### Material

A - Carbon steel  
B - Stainless steel

### Porting Type

V - Vertical Porting  
H - Horizontal Porting  
N - Non Porting

### Monitoring

CY - Cycle Indicator **SA1525**  
LS - Limit Switch **SA1523**  
HP - Horizontal Proximity Sensor **SA1529**  
VP - Vertical Proximity Sensor **SA1527**  
HH - Horizontal Proximity Housing **SA1557**  
(Proximity Switch by Customer)  
VH - Vertical Proximity Housing **SA1558**  
(Proximity Switch by Customer)  
WM - Without Monitoring

### Inlet Adapter Model

MA - 1/8" BSP-6L Straight **BJ090**  
MC - 1/8" BSP-6L Banjo **BJ453**  
ME - 1/8" BSP-6LL Banjo **SA1577**  
MF - 1/8" BSP-6LL Straight **SA014**  
MG - 1/8" BSP x 6mm Push in Fitting **BM239**  
MH - 1/8" BSP Grease Nipple **SA1362**  
MW - Without inlet Adapter

### Outlet Adapter model

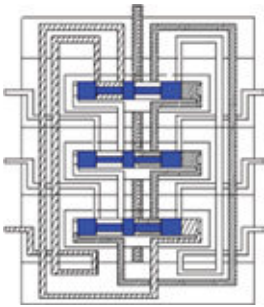
KA - 4mm Nut & Ferrule **SA020**  
KB - 6LL Nut & Ferrule DH / DN Type **SA933**  
KC - 6LL Nut & Ferrule DV Type **SA008**  
KD - 6mm Push in fitting DH / DN Adapter **BM294**  
KE - 4mm Push in fitting DH / DN Adapter **BM225**  
KF - 6LL Nut & Ferrule DH / DN Type with performance indicator **SA1539**  
KG - 6LL Nut & Ferrule DV Type with performance indicator **SA1571**  
KH - 4mm NRV Outlet Adapter for Pushfit **SA1573**  
KW - Without outlet Adapter

### Examples : 21D-10-AH-KW-MW-LS

21D-10way-A (carbon steel) - H (Horizontal Porting) - KW (W/o Outlet Filter) - MW (W/o Inlet Adapter - LS (Limit Switch)

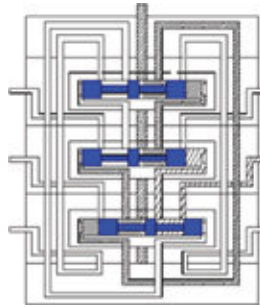


## Working



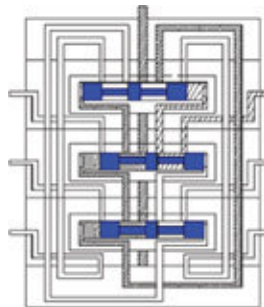
### Stage 1

The lubricant enters the PROGRESSIVE UNIT through the inlet provided at the Front Block. The lubricant takes the preset path to the left end of the Plunger No. 3. The Plunger is pushed to its right and the lubricant at its right end of the Plunger is pushed out through the Outlet No. 5. The Plunger



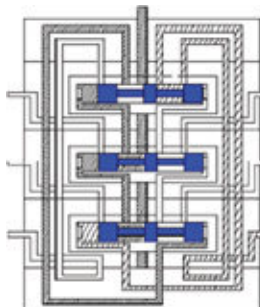
### Stage 2

After the first sequence of operation where the Plunger No. 3 is displaced to its right end, the lubricant path to the left end of Plunger No. 2 is opened. The lubricant is pushed and filled at the left end of the Plunger No. 2. This pushes the Plunger to its right end. The lubricant at the right end of the Plunger No. 2 is pushed



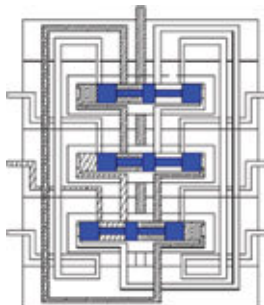
### Stage 3

Now the lubricant is filled at the left end of the Plunger No. 1 as the lubricant path to it is opened by the displacement of Plunger No. 2 to its right end in the previous operation. This pushes the Plunger to its right end and therefore pushing the lubricant at its right end out through the Outlet No. 2.



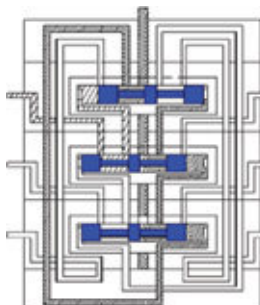
### Stage 4

The progressively displacing of the plungers at their right end, the lubricant path to the right end of the Plunger No. 3 is opened. The Plunger moves to its left and dispenses the lubricant out through the Outlet No. 6.



### Stage 5

The lubricant enters the right end of Plunger No. 2 and forces the plunger to move to its left to dispense the lubricant through the Outlet No. 3.



### Stage 6

In the final sequence of operation to complete an entire progressive cycle the lubricant is forced to the right end of the Plunger No. 1 and it delivers the lubricant at its left end out through the Outlet No. 1.

## contact us



📍 No: 203, Nageswara Rao Road, 2nd extn.,  
Athipet, Ambattur, Chennai - 600 058  
Tamil Nadu, INDIA

✉ info@rikkongroup.com / sales@rikkongroup.com  
🌐 www.rikkongroup.com / www.luberr.in



contact person :